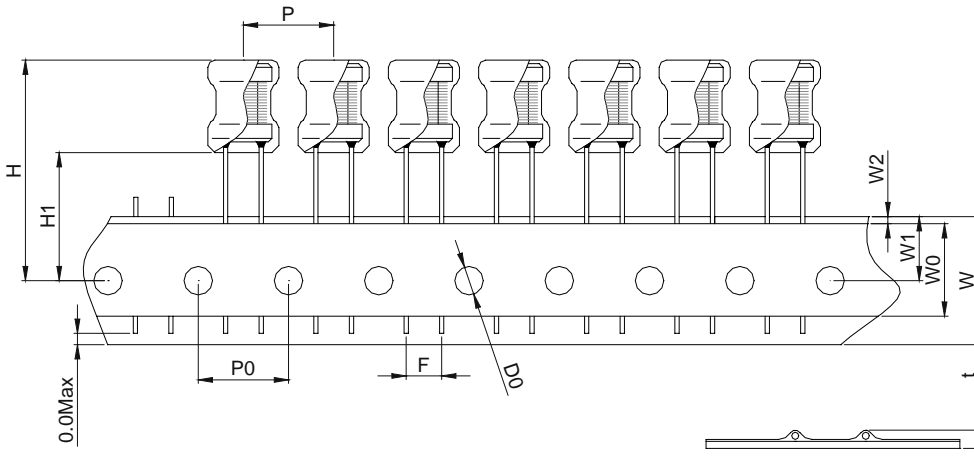


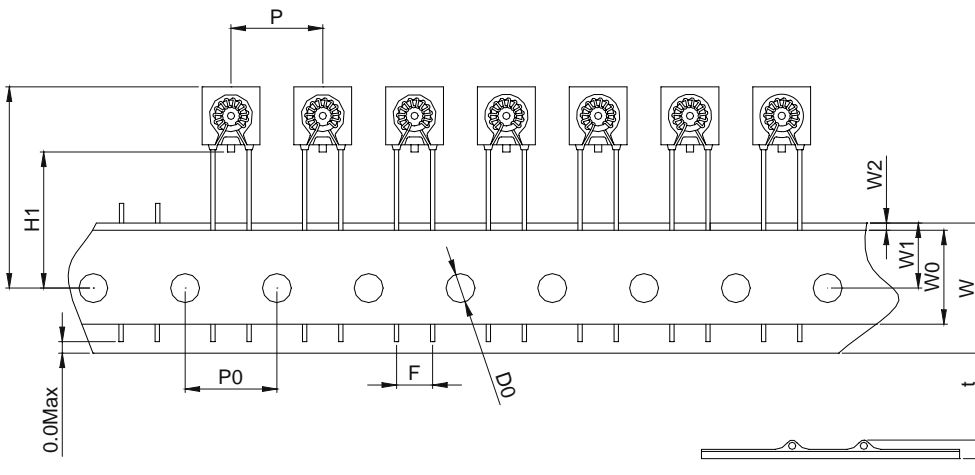
Lead Type Packaging

PK0810/RI0807/0809/PKB0807 Series Packaging



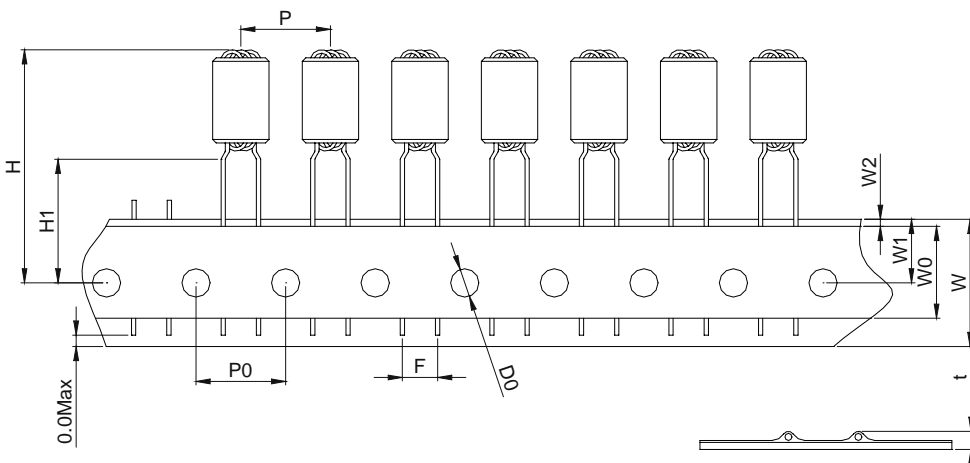
Item	Dimension (mm)
H	32.5 Max
H1	18.0±1.0
P	12.7±1.0
P0	12.7±1.0
F	5.0±1.0
D0	4.0±0.5
W	18.0±0.5
W0	12.5 Min
W1	9.0±1.0
W2	1.0 Max
t	1.50 Max

BCB809535 Series Packaging



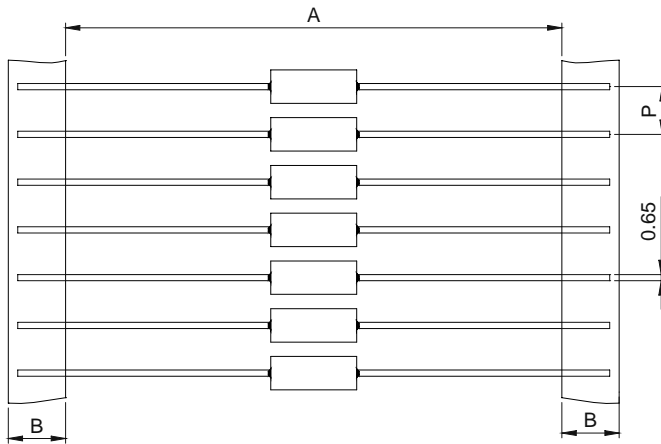
Item	Dimension (mm)
H	32.5 Max
H1	18.0±1.0
P	12.7±1.0
P0	12.7±1.0
F	5.0±1.0
D0	4.0±0.5
W	18.0±0.5
W0	12.5 Min
W1	9.0±1.0
W2	1.0 Max
t	1.50 Max

R6H Series Packaging



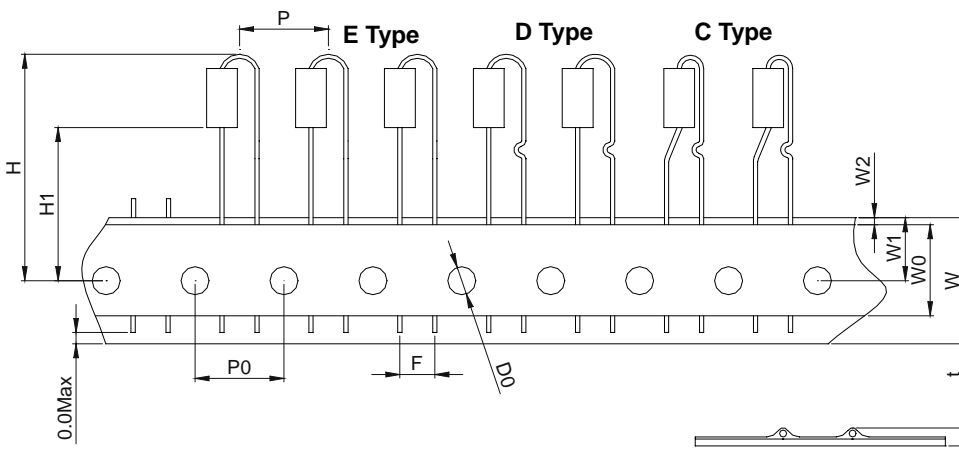
Item	Dimension (mm)
H	32.5 Max
H1	18.0±1.0
P	12.7±1.0
P0	12.7±1.0
F	5.0±1.0
D0	4.0±0.5
W	18.0±0.5
W0	12.5 Min
W1	9.0±1.0
W2	1.0 Max
t	1.50 Max

RH/AL Series Packaging  
A Type T52/26



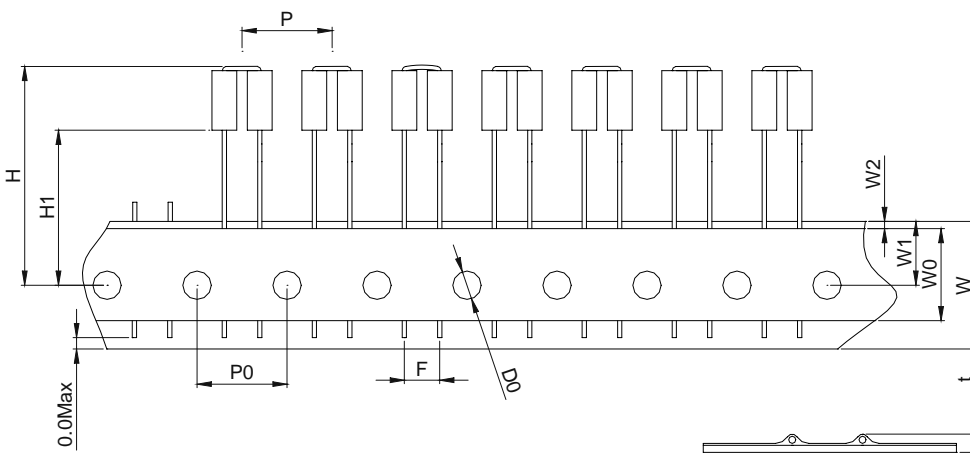
Item	Dimension (mm)
A	52(T52)/26(T26)
B	6.0±1.0
P	5.0±0.5

C/D/E Type



Item	Dimension (mm)
H	32.5 Max
H1	16.5±1.0
P	12.7±1.0
P0	12.7±1.0
F	5.0±1.0
D0	4.0±0.5
W	18.0±0.5
W0	12.5 Min
W1	9.0±1.0
W2	1.0 Max
t	1.50 Max

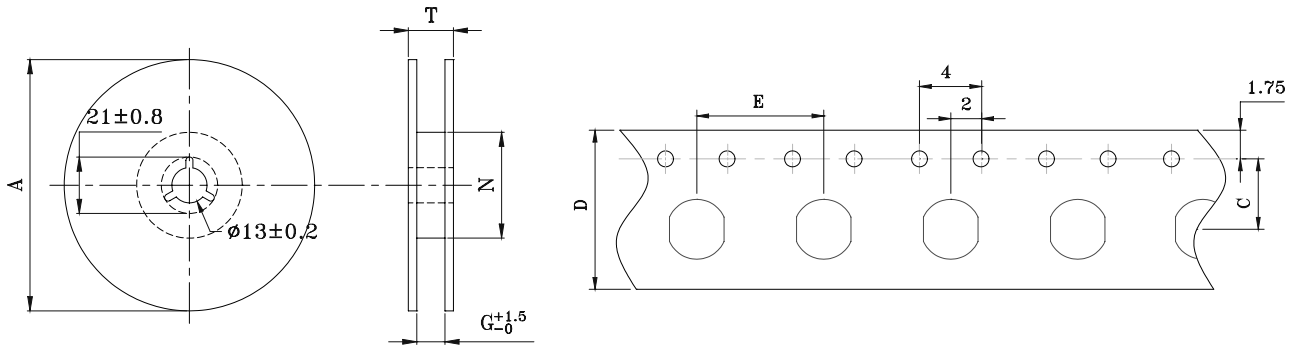
F Type



Item	Dimension (mm)
H	32.5 Max
H1	16.5±1.0
P	12.7±1.0
P0	12.7±1.0
F	5.0±1.0
D0	4.0±0.5
W	18.0±0.5
W0	12.5 Min
W1	9.0±1.0
W2	1.0 Max
t	1.50 Max

# Packaging (產品包裝)

## Surface Mount Type Packaging Tape & Reel Specifications



### Packaging Quantity and Dimension:

Series Number	Parts per reel		Reel dimensions (mm)				Tape dimensions (mm)		
	7" (178mm)	13" (330mm)	A	T	N	G	C	D	E
FCM100505	4000		178	12.5	60	8.5	3.5	8	4
FCM160808	4000		178	12.5	60	8.5	3.5	8	4
FCM201209	4000		178	12.5	60	8.5	3.5	8	4
FCM321611	3000		178	12.5	60	8.5	3.5	8	4
FCM322513	2500		178	12.5	60	8.5	3.5	8	8
FCM451616	2000		178	16.5	60	12.5	5.5	12	4
FCM453215	1000		178	16.5	60	12.5	5.5	12	8
HCB160808	4000		178	12.5	60	8.5	3.5	8	4
HCB201209	4000		178	12.5	60	8.5	3.5	8	4
HCB321611	3000		178	12.5	60	8.5	3.5	8	4
HCB322513	2500		178	12.5	60	8.5	3.5	8	8
HCB451616	2000		178	16.5	60	12.5	5.5	12	4
HCB453215	1000		178	16.5	60	12.5	5.5	12	8
HCB575018	1000		178	20.5	60	16.5	7.5	16	8
SMH2020	1500		178	12.5	60	8.5	3.5	8	4
SMH2320	1500		178	12.5	60	8.5	3.5	8	4
SMH2520	1500		178	12.5	60	8.5	3.5	8	4
SMH3225		3000	330	12.5	100	8.5	3.5	8	8
SMH4532		2000	330	16.5	100	12.5	5.5	12	8
FCI160808	4000		178	12.5	60	8.5	3.5	8	4
FCI201209	4000		178	12.5	60	8.5	3.5	8	4
FCI201212	2000		178	12.5	60	8.5	3.5	8	4
FCI252016	2000		178	12.5	60	8.5	3.5	8	4
FCI321611	3000		178	12.5	60	8.5	3.5	8	4
FCI322513	2500		178	12.5	60	8.5	3.5	8	8
FCI453215	1000		178	16.5	60	12.5	5.5	12	8
LPI2015	3000		178	12.5	60	8.5	3.5	8	4
LPI2520	2000		178	12.5	60	8.5	3.5	8	4
LPI3216	3000		178	12.5	60	8.5	3.5	8	4
LPI3225		3000	330	12.5	100	8.5	3.5	8	8
LPI4532		2000	330	16.5	100	12.5	5.5	12	8
LPI5750		1500	330	20.5	100	16.5	7.5	16	8
WCI3225		3000	330	12.5	100	8.5	3.5	8	8
WCI4532		2000	330	16.5	100	12.5	5.5	12	8
WHI3225		3000	330	12.5	100	8.5	3.5	8	8
WHI4532		2000	330	16.5	100	12.5	5.5	12	8
FPI0301	2500		178	16.5	60	12.5	5.5	12	8
FPI0302L		4000	330	16.5	100	12.5	5.5	12	8
FPI0302		3000	330	16.5	100	12.5	5.5	12	8
FPI0403		2000	330	16.5	100	12.5	5.5	12	8

## Packaging (產品包裝)

### Packaging Quantity and Dimension:

Series Number	Parts per reel		Reel dimensions (mm)				Tape dimensions (mm)		
	7" (178mm)	13" (330mm)	A	T	N	G	C	D	E
FPI0502		3000	330	20.5	100	16.5	7.5	16	8
FPI0503		2500	330	20.5	100	16.5	7.5	16	8
FPI0504		1500	330	20.5	100	16.5	7.5	16	8
FPI0703		1000	330	20.5	100	16.5	7.5	16	12
FPI0705		1000	330	20.5	100	16.5	7.5	16	12
FPI1004		1000	330	28.5	100	24.5	11.5	24	12
FPI1005		750	330	28.5	100	24.5	11.5	24	12
DS1608		2500	330	20.5	100	16.5	7.5	16	8
DS1704	1000		178	20.5	60	16.5	7.5	16	8
DS2506		3000	330	20.5	100	16.5	7.5	16	12
DS3308		1000	330	28.5	100	24.5	11.5	24	12
DS3316		750	330	28.5	100	24.5	11.5	24	12
DS3340		250	330	28.5	100	24.5	11.5	24	12
DS5022		225	330	36.5	100	32.5	15.5	32	20
CHTPW2012		1000	330	28.5	100	24.5	11.5	24	12
CHTPW3308		1000	330	28.5	100	24.5	11.5	24	12
CHTPW3316		750	330	28.5	100	24.5	11.5	24	12
CHTPW3340		250	330	28.5	100	24.5	11.5	24	12
CHTPW5022		225	330	36.5	100	32.5	15.5	32	20
BS1813		1500	330	28.5	100	24.5	11.5	24	8
BS3316		750	330	28.5	100	24.5	11.5	24	12
BS5022		225	330	36.5	100	32.5	15.5	32	20
LDR655312	3000		178	20.5	60	16.5	7.5	16	8
TP0603		1500	330	20.5	100	16.5	7.5	16	12
TP0604		1500	330	20.5	100	16.5	7.5	16	12
TP0605		1000	330	20.5	100	16.5	7.5	16	12
TP0703		1000	330	20.5	100	16.5	7.5	16	12
TP0705		1000	330	20.5	100	16.5	7.5	16	12
TP1003		1500	330	28.5	100	24.5	11.5	24	12
TP1004		1000	330	28.5	100	24.5	11.5	24	12
SRI0703		1000	330	20.5	100	16.5	7.5	16	12
SRI0704		1000	330	20.5	100	16.5	7.5	16	12
SRI1204		750	330	28.5	100	24.5	11.5	24	16
SRI1205		500	330	28.5	100	24.5	11.5	24	16
SRI1207		500	330	28.5	100	24.5	11.5	24	16
SRB0603		1000	330	20.5	100	16.5	7.5	16	12
SRB0605		750	330	20.5	100	16.5	7.5	16	12
SRB0703		1000	330	20.5	100	16.5	7.5	16	12
SRB0704		1000	330	20.5	100	16.5	7.5	16	12
SRB1204		750	330	28.5	100	24.5	11.5	24	16
SRB1205		500	330	28.5	100	24.5	11.5	24	16
SRB1207		500	330	28.5	100	24.5	11.5	24	16
DSS1608		2500	330	20.5	100	16.5	7.5	16	8
DSS3316		750	330	28.5	100	24.5	11.5	24	12
DSS5022		225	178	36.5	60	32.5	15.5	32	20
CHTPR2012		1000	178	28.5	60	24.5	11.5	24	12
CHTPR3308		1000	178	28.5	60	24.5	11.5	24	12
CHTPR3316		750	178	28.5	60	24.5	11.5	24	12
CHTPR5022		225	178	36.5	60	32.5	15.5	32	20
MPI0502		2500	330	20.5	100	16.5	7.5	16	8
MPI0603		2000	330	20.5	100	16.5	7.5	16	8
MPI0705		1000	330	28.5	100	24.5	11.5	24	12
MPI1005		750	330	28.5	100	24.5	11.5	24	12
MPI1205		500	330	28.5	100	24.5	11.5	24	16
SPI6025		2500	330	20.5	100	16.5	7.5	16	8
SPI6028		2500	330	20.5	100	16.5	7.5	16	8
SPI6038		2000	330	20.5	100	16.5	7.5	16	8
SPI6048		1500	330	20.5	100	16.5	7.5	16	8

## Packaging (產品包裝)

### Packaging Quantity and Dimension:

Series Number	Parts per reel		Reel dimensions (mm)				Tape dimensions (mm)		
	7" (178mm)	13" (330mm)	A	T	N	G	C	D	E
SPI7028		1500	330	20.5	100	16.5	7.5	16	12
SPI7030		1500	330	20.5	100	16.5	7.5	16	12
SPI7032		1000	330	20.5	100	16.5	7.5	16	12
SPI7045		1000	330	20.5	100	16.5	7.5	16	12
SPI10130		1500	330	28.5	100	24.5	11.5	24	12
SPI10145		1000	330	28.5	100	24.5	11.5	24	12
SPI12555		500	330	28.5	100	24.5	11.5	24	16
SPI12565		500	330	28.5	100	24.5	11.5	24	16
SPI12575		500	330	28.5	100	24.5	11.5	24	16
CDRH2D11	1500		178	16.5	60	12.5	5.5	12	8
CDRH2D14	1000		178	16.5	60	12.5	5.5	12	8
CDRH2D18	1000		178	16.5	60	12.5	5.5	12	8
CDRH3D11	1500		178	16.5	60	12.5	5.5	12	8
CDRH3D16		4000	330	16.5	100	12.5	5.5	12	8
CDRH3D28		2500	330	16.5	100	12.5	5.5	12	8
CDRH4D18		4000	330	16.5	100	12.5	5.5	12	8
CDRH4D28		2500	330	16.5	100	12.5	5.5	12	8
CDRH5D18		4000	330	20.5	100	16.5	7.5	16	8
CDRH5D28		2500	330	20.5	100	16.5	7.5	16	8
CDRH6D28		1500	330	20.5	100	16.5	7.5	16	12
CDRH6D38		1000	330	20.5	100	16.5	7.5	16	12
CDRH8D28		1500	330	20.5	100	16.5	7.5	16	12
CDRH8D38		1000	330	20.5	100	16.5	7.5	16	12
CDRH8D43		1000	330	20.5	100	16.5	7.5	16	12
SDRH4D18		4000	330	16.5	100	12.5	5.5	12	8
SDRH4D28		2500	330	16.5	100	12.5	5.5	12	8
SDRH5D18		4000	330	20.5	100	16.5	7.5	16	8
SDRH5D28		2500	330	20.5	100	16.5	7.5	16	8
SDRH6D28		1500	330	20.5	100	16.5	7.5	16	12
SDRH6D38		1000	330	20.5	100	16.5	7.5	16	12
CDRH10D30		1500	330	28.5	100	24.5	11.5	24	12
CDRH10D40		1000	330	28.5	100	24.5	11.5	24	12
CDRH10D50		750	330	28.5	100	24.5	11.5	24	12
CDRH10D60		750	330	28.5	100	24.5	11.5	24	12
CDRH10D68		500	330	28.5	100	24.5	11.5	24	12
CDRH10D50MN		750	330	28.5	100	24.5	11.5	24	12
SDS0420		4000	330	16.5	100	12.5	5.5	12	8
SDS0518		4000	330	16.5	100	12.5	5.5	12	8
SDS0520		3000	330	16.5	100	12.5	5.5	12	8
SDS0530		2500	330	16.5	100	12.5	5.5	12	8
SDS0610	1500		178	20.5	60	16.5	7.5	16	8
SDS0620		3000	330	20.5	100	16.5	7.5	16	8
SDS0625		3000	330	20.5	100	16.5	7.5	16	8
SDS0630		2500	330	20.5	100	16.5	7.5	16	8
SDS0635		2000	330	20.5	100	16.5	7.5	16	8
SDS1203		1000	330	28.5	100	24.5	11.5	24	16
SDS1205		500	330	28.5	100	24.5	11.5	24	16
SDS1206		500	330	28.5	100	24.5	11.5	24	16
SDS1208		400	330	28.5	100	24.5	11.5	24	16
SDR3811	1500		178	16.5	60	12.5	5.5	12	8
SDR3818		4000	330	16.5	100	12.5	5.5	12	8
SDR5010		3500	330	16.5	100	12.5	5.5	12	8
SDR5012		3500	330	16.5	100	12.5	5.5	12	8
SDR5018		3500	330	16.5	100	12.5	5.5	12	8
SDR5020		2500	330	16.5	100	12.5	5.5	12	8
SDR5025		2500	330	16.5	100	12.5	5.5	12	8
CDR0703		1000	330	20.5	100	16.5	7.5	16	12
CDR0704		1000	330	20.5	100	16.5	7.5	16	12

## Packaging (產品包裝)

### Packaging Quantity and Dimension:

Series Number	Parts per reel		Reel dimensions (mm)				Tape dimensions (mm)		
	7" (178mm)	13" (330mm)	A	T	N	G	C	D	E
CDR1004		750	330	28.5	100	24.5	11.5	24	16
CDR1007		500	330	28.5	100	24.5	11.5	24	16
SDT3713		500	330	36.5	100	32.5	15.5	32	16
SDT4416		250	330	36.5	100	32.5	15.5	32	20
SDT5019		250	330	36.5	100	32.5	15.5	32	24
SDT5025		200	330	36.5	100	32.5	15.5	32	24
SCTSCT-1P		750	330	28.5	100	24.5	11.5	24	16
SCTSCT-2P		500	330	28.5	100	24.5	11.5	24	16
SCTSCT-3P		750	330	28.5	100	24.5	11.5	24	16
SCTSCT-4P		500	330	28.5	100	24.5	11.5	24	16
HCPI2635		1000	330	20.5	100	16.5	7.5	16	12
HCPI2640		1000	330	20.5	100	16.5	7.5	16	12
HCPI2645		1000	330	20.5	100	16.5	7.5	16	12
HCPI2650		750	330	20.5	100	16.5	7.5	16	12
HCPI4035		1000	330	28.5	100	24.5	11.5	24	12
HCPI4040		1000	330	28.5	100	24.5	11.5	24	12
HCPI4045		1000	330	28.5	100	24.5	11.5	24	12
HCPI4050		750	330	28.5	100	24.5	11.5	24	12
HCPI5035		1000	330	28.5	100	24.5	11.5	24	16
HCPI5040		750	330	28.5	100	24.5	11.5	24	16
HCPI5046		750	330	28.5	100	24.5	11.5	24	16
HCPI5052		500	330	28.5	100	24.5	11.5	24	16
HCPI5058		500	330	28.5	100	24.5	11.5	24	16
HCPI5064		500	330	28.5	100	24.5	11.5	24	16
HCPI5070		500	330	28.5	100	24.5	11.5	24	16
HCPI5076		400	330	28.5	100	24.5	11.5	24	16
SLPI1208		400	330	28.5	100	24.5	11.5	24	16
BWH129L		250	330	28.5	100	24.5	11.5	24	16
SIC12035		750	330	28.5	100	24.5	11.5	24	16
SIC12040		750	330	28.5	100	24.5	11.5	24	16
SIC12045		750	330	28.5	100	24.5	11.5	24	16
SIC12050		500	330	28.5	100	24.5	11.5	24	16
SIC12053		500	330	28.5	100	24.5	11.5	24	16
SIC12055		500	330	28.5	100	24.5	11.5	24	16
SIC12060		500	330	28.5	100	24.5	11.5	24	16
SIC12065		400	330	28.5	100	24.5	11.5	24	16
SIC12070		400	330	28.5	100	24.5	11.5	24	16
T4W		2500	330	16.5	100	12.5	5.5	12	8
T5W		1500	330	20.5	100	16.5	7.5	16	8
B4W		2500	330	16.5	100	12.5	5.5	12	8
B5W		1500	330	20.5	100	16.5	7.5	16	8
SMH465516		3000	330	20.5	100	16.5	7.5	16	8
SMH058505		1000	330	28.5	100	24.5	11.5	24	8
SMH750603		1500	330	28.5	100	24.5	11.5	24	8
SMH100805		750	330	28.5	100	24.5	11.5	24	12
SMH121006		750	330	28.5	100	24.5	11.5	24	12
SMB060604		1000	330	28.5	100	24.5	11.5	24	12
SMB080604		1000	330	28.5	100	24.5	11.5	24	12
SMB100604		1000	330	28.5	100	24.5	11.5	24	12
R5H0505		1000	330	20.5	100	16.5	7.5	16	8
R6H0510		1000	330	28.5	100	24.5	11.5	24	8
SBT4F		2000	330	16.5	100	12.5	5.5	12	8
SBT5F		750	330	20.5	100	16.5	7.5	16	12
SBT5FL		1500	330	20.5	100	16.5	7.5	16	8